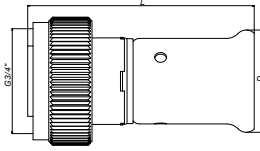




TYPE: 19PK
TYPE: 19PKW

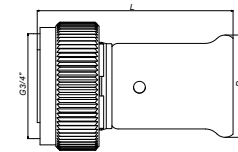
Press fit to eurocone



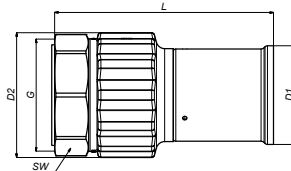
ART. NR.	L mm	D mm	G
19PK-1605	55	22	3/4"
19PK-2005	55	26	3/4"
19PKW-1605	55	22	3/4"
19PKW-2005	55	26	3/4"

TYPE: 26PK
TYPE: 26PKW

Press fitting with flat sealing



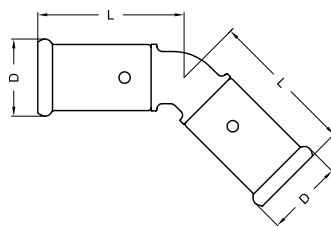
ART. NR.	L mm	D mm	G
26PK-1605	50	22	3/4"
26PK-2005	55	26	3/4"
26PKW-1605	50	22	3/4"
26PKW-2005	55	26	3/4"



ART. NR	L mm	D1 mm	D2 mm	G mm	SW mm
26PK-4008	103,5	47	56,5	1 1/2"	53
26PK-5010	126,5	57	70	2"	64
26PK-6312	154,5	70	88	2 1/2"	80

TYPE: 27PK

45° bend



ART. NR.	L mm	D mm
27PK-4040	63	47
27PK-5050	84	57
27PK-6363	102	70